



GAT MONTHLY MEMBERSHIP PROGRESS REPORT

Results as of: 4/30/2023

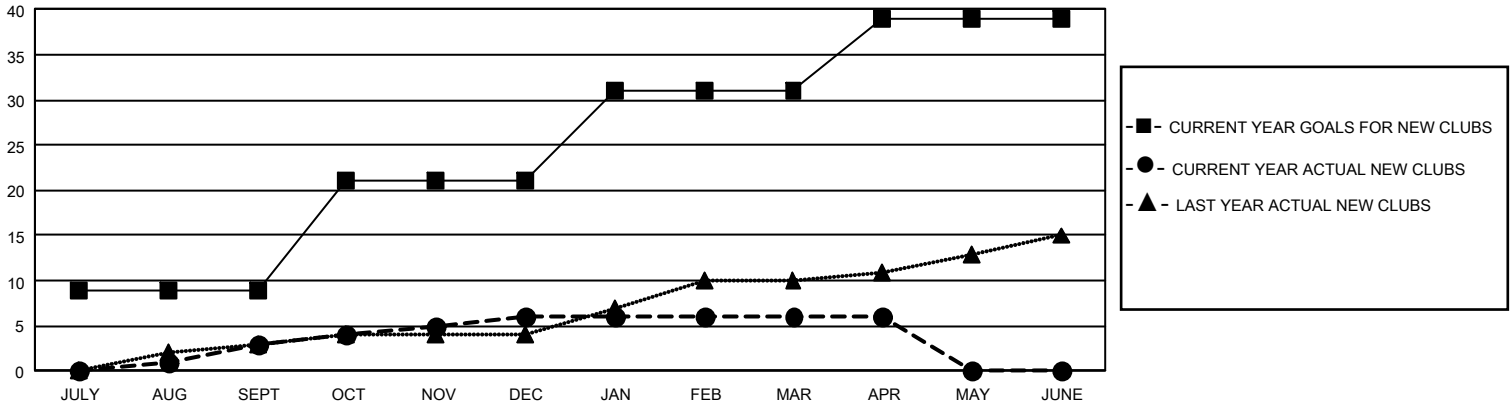
GMT Constitutional Area 1, Group M

REPORT DOES NOT INCLUDE CLUBS IN UNDISTRICTED AREAS.

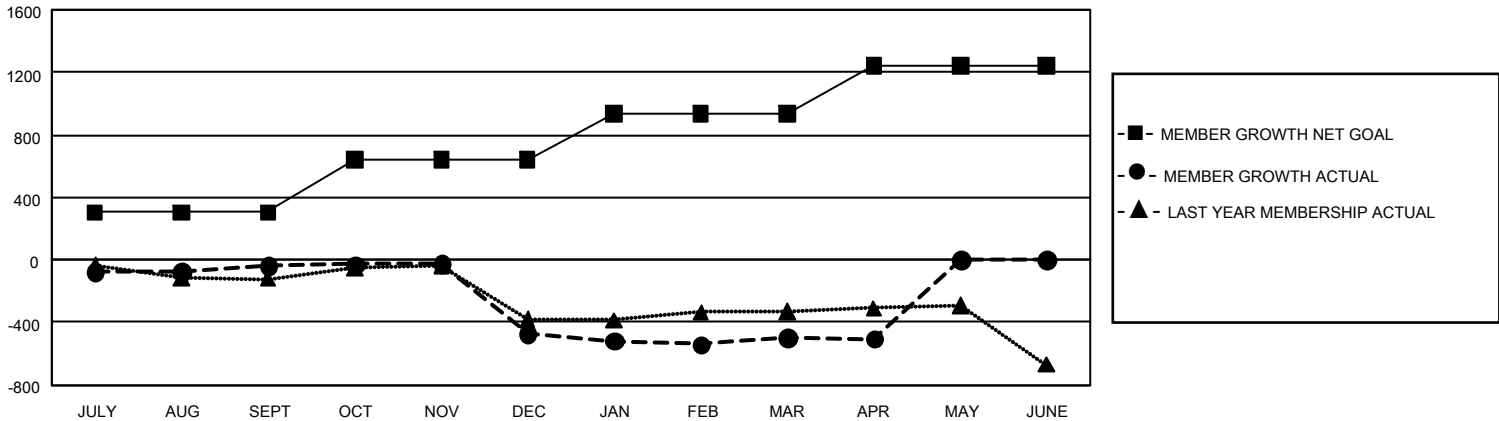
Clubs			
RESULTS FOR 2022-2023			
QUARTER	NEW CLUB GOAL	NEW CLUBS	DROPPED CLUBS
JULY/AUG/SEPT	27	3	7
OCT/NOV/DEC	36	3	18
JAN/FEB/MAR	30	0	7
APR/MAY/JUNE	24	0	1

Members			
RESULTS FOR 2022-2023			
QUARTER	MEMBER GROWTH NET GOAL	MEMBER GROWTH ACTUAL	DROPPED MEMBERS ACTUAL (including transfers)
JULY/AUG/SEPT	306	618	561
OCT/NOV/DEC	335	550	939
JAN/FEB/MAR	292	670	611
APR/MAY/JUNE	307	180	170

GOALS AND ACTUAL NEW CLUBS CUMULATIVE



GOALS AND ACTUAL MEMBERS CUMULATIVE



DROPPED CLUBS: 33	409 CLUBS OF 792 ADDED 1 OR MORE NEW MEMBERS	<u>GENDER DISTRIBUTION</u>	
<u>DROPPED MEMBERS</u>		MALE	10,114 (60.47%)
DECEASED	279	FEMALE	6,606 (39.50%)
CLUB CANCELLED	257	NON BINARY	1 (0.01%)
OTHER	1,747	PREFER NOT TO ANSWER	4 (0.02%)
TOTAL	2,283	TOTAL FAMILY UNIT MEMBERS	3,590
	CLICK HERE FOR CUMULATIVE MEMBERSHIP DATA	FAMILY MEMBERS PAYING HALF DUES	1,840